



Philman Corporate
Distribution Corporation

COMPANY PROFILE

Powering the Future, Today:
Philman Generators, Your
Energy Solution

Presented by: Philman Generators

 www.philmangeneratorsinc.com





Philman Generators

ABOUT OUR COMPANY

The company has its humble beginnings as a sole proprietorship in January 1963 founded by Federico T. Tan, the center of operations was a leased 600-sq. m. store and manpower consisting of three to five people. The business was brisk as the Company focused on indent orders of hardware-based products.

In 1969, while the trading company was flourishing, Federico T. Tan decided to expand and venture into the welding business.

During those times, the products offered by the company were as follows: Welding machines & accessories (electrodes/electrode Holder); Agricultural heavy and light equipment (rice dryer, gasoline & diesel engine, and electric motor); Mining equipment (cable wires, bearing, pillow blocks, and mercury); and General light industrial equipment & accessories (abrasive paper & rolls, electric press, drill machine, vise, torch, etc.).

The expansion was very successful, in 1972, the Company was able to establish its own head office. It was also within this year when the Company undertook the selling of products demanded in the Upholstery and Mining industries.

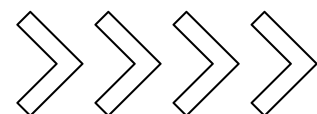
The decade of the 70s and the early years of the 80s brought the Company to higher heights. Its growth steadily rose to enable it to forge ties with foreign suppliers, who entrusted the marketing of their worldwide-trusted products into the hands of the Company.

In the year 2003, the company becomes the corporation known as Philman Corporate Distribution Corporation today.

As the Company had already proven its ability to enter into commerce in the global trade, its list of clientele expanded, making the Company one of the most admired marketing firms in the country.

In the Year 2008, the company entered into a new business to carry on generating sets and parts. The Company Founded PHILMAN GENERATOR (PHILGEN).

 www.philmangeneratorsinc.com





Philman Generators



VISION

To be the world's most dynamic generator company. Creating sustainable solutions essential to a better, safer, and healthier life for people everywhere. It desires to enhance its position as the leading company in the power generator sector.

MISSION

We create Customer Value - keep their businesses smoothly running by offering power solutions. Employee Satisfaction - respect people & offer them a fair, dynamic, and open environment. Environment Care - minimize the effect of our activities on the environment. Social Responsibility- maximize our contributions to social stability, harmony, and safety.

VALUES

Our values tell us how we should behave and signal that we want to be a better and stronger business. Use them, live them, and breathe them in your everyday conversations - so our customers know what to expect when they interact with us.

www.philmangeneratorsinc.com



Philman Generators

MILESTONE

More than 10,000 generator sets sold from 5kVa to 2500kVa.

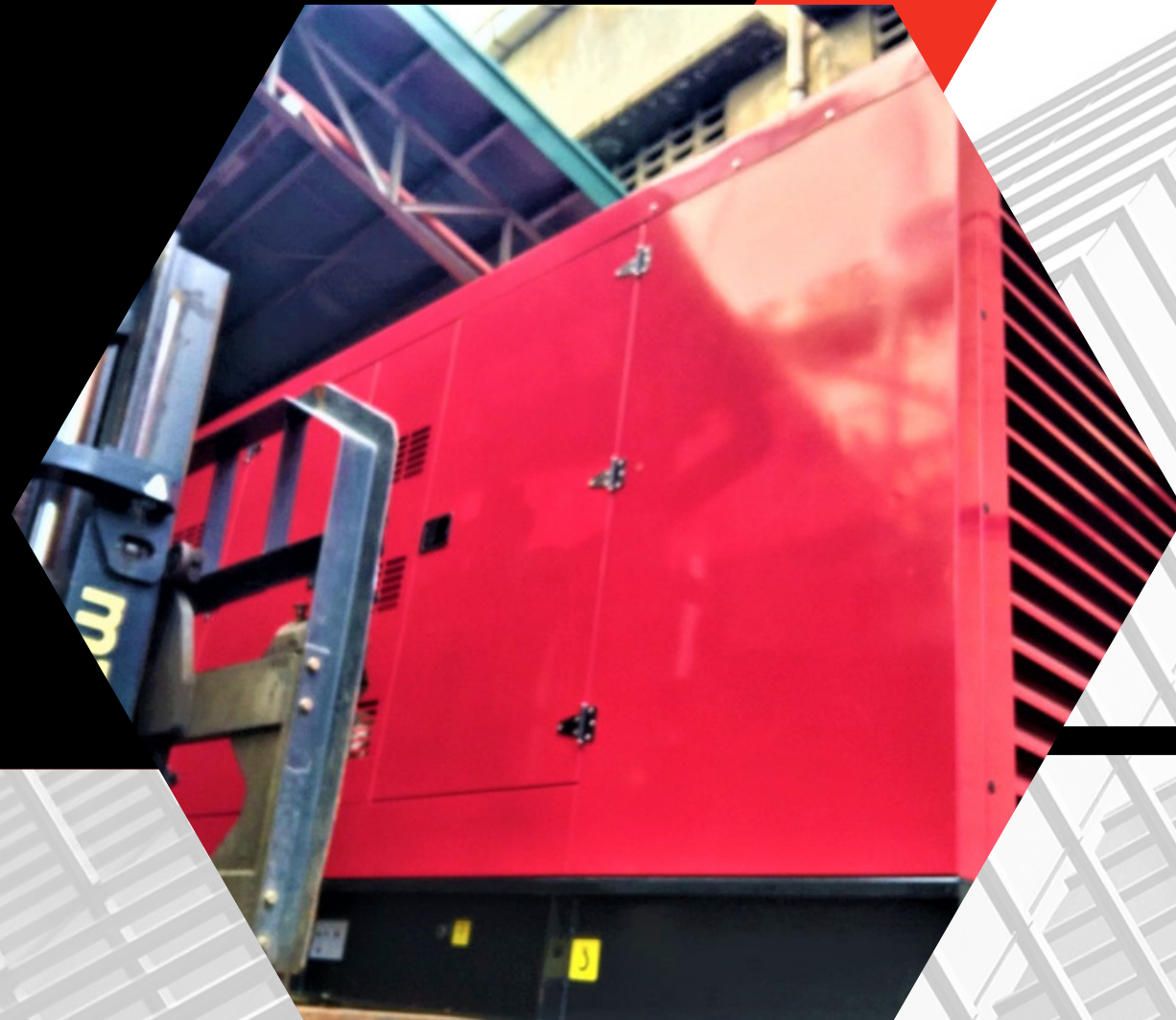
Supplied different sectors of the industry like Hospitals, Government Agencies, TelCom, Water districts, Electrical Construction, Poultry, Mining, Maritime, Shipping, Developers, and many more.

Nationwide Distribution

Philman is a distributor of advanced industrial products and solutions, specializing in Philman Generators and Miller Geosynthetics. Our products are designed to deliver consistent performance, long-term reliability, and cost-effectiveness. Our team of experts is dedicated to providing our customers with quality products and services that meet their needs and exceed their expectations.

At Philman, we are passionate about helping our customers find the right solutions for their businesses. We understand the importance of having products that are reliable and efficient, and we are committed to providing the highest quality products and services.

www.philmangeneratorsinc.com



OUR PRODUCTS



Philman Generators

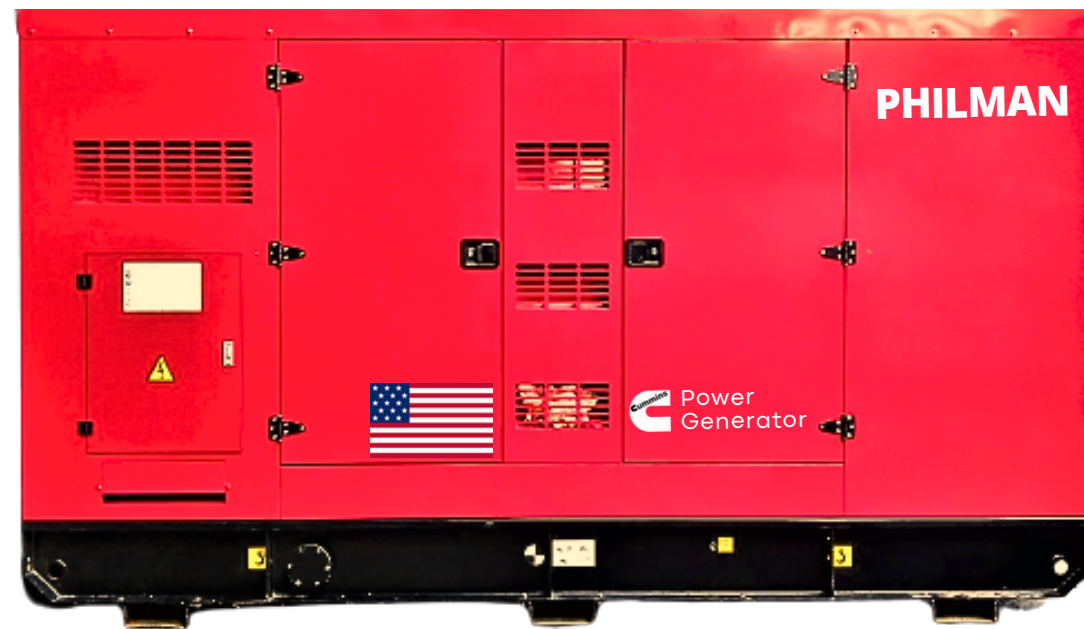
DIESEL GENERATORS SET

POWER BY SOME OF THE MOST TRUSTED AND RELIABLE ENGINES IN THE WORLD

Unleash the Power of Possibilities: Philman Generators, Where Innovation Meets Power!

ISO 9001:2015, ISO 14001:2015 EN ISO 8528-13:2016, EN ISO 12100:2010, EN 60204-1:2018

EN ISO 12100:2010, EN ISO 8528-13:2016 EN 60204-1:2018, EN 55012-12:2007+A1:2009



Cummins Power Range:
25kVA - 2500kVA



Isuzu Power Range:
20kVA - 80kVA



Powergen Yangdong
Power Range:
10kVA - 100kVA



OUR PRODUCTS

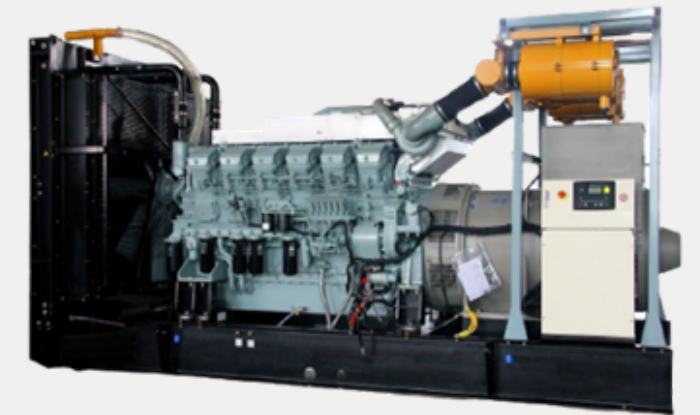


OTHER PRODUCTS (AS PER INQUIRY)

Open Type Power
Range: 10kVA - 3900kVA



Mitsubishi Power
Range: 1000kVA - 2500kVA



MTU Power
Range: 500kVA - 3500kVA



Perkins Power
Range: 37kVA - 1800kVA



www.philmangeneratorsinc.com





Philman Generators

CUMMINS RATING SHEET

The technical specification is subject to improvement without prior notice. All technical details should be validated by our Cummins Technical Team.



Assemble in China

www.philmangeneratorsinc.com



Assemble in China.

Range: 15 kVA – 4,508 kVA | Max synchronized capacity 40,000 kVA & up | 60 Hz



Standby Power		Prime Power		Continuous Power		Engine	Consumption	Engine Specification			Dimension Open	Weight	Dimension Silent	Weight	dB(A)	Tank
kVA	kW	kVA	kW	kVA	kW	Model	100 % (L/H)	Cyl.	Gov.	Asp.	LxWxH	KG	LxVxH	KG	7m 200	(L)
25	20	23	18	18	14	4B3.9-G11	7.5	4	M	NA	1800x850x1350	700	2256x1006x1543	1100	77	105
28	22	25	20	20	16	4B3.9-G11	7.5	4	M	NA	1800x850x1350	700	2256x1006x1543	1100	77	105
30	24	27	22	22	18	4B3.9-G11	7.5	4	M	NA	1800x850x1350	700	2256x1006x1543	1100	77	105
33	26	30	24	24	19	4B3.9-G2	7.5	4	E	NA	1800x850x1374	700	2256x1006x1543	1100	77	105
35	28	32	25	26	20	4B3.9-G2	7.5	4	E	NA	1800x850x1374	700	2256x1006x1543	1100	77	105
41	33	38	30	30	24	4B3.9-G12	9.3	4	E	NA	1800x850x1374	700	2256x1006x1543	1100	77	105
45	36	41	33	33	26	4BT3.9-G2	9.3	4	E	TC	1800x850x1374	700	2256x1006x1543	1200	77	105
50	40	45	36	36	29	4BT3.9-G2	9.3	4	E	TC	1800x850x1374	700	2256x1006x1543	1200	77	105
55	44	50	40	40	32	4BT3.9-G2	9.3	4	E	TC	1800x850x1374	700	2256x1006x1543	1200	77	105
65	52	59	47	47	38	4BTA3.9-G2	17.4	4	E	TCA	1870x860x1384	950	2358x1006x1553	1250	77	125
75	60	68	55	54	44	4BTA3.9-G2	17.4	4	E	TCA	1870x860x1384	950	2358x1006x1553	1250	77	125
85	68	75	60	60	48	4BTA3.9-G2	17.4	4	E	TCA	1870x860x1384	950	2358x1006x1553	1250	77	125
90	72	82	65	66	52	4BTA3.9-G11	20.1	4	E	TCA	1900x860x1420	960	2458x1006x1583	1350	77	145
*100	80	90	72	72	58	4BTA3.9-G11	20.1	4	E	TC	1900x860x1420	960	2458x1006x1583	1350	77	145
100	80	90	72	72	58	6BT5.9-G2	20.1	4	E	TCA	1900x860x1420	960	2458x1006x1583	1350	77	145
100	88	100	80	80	64	6BT5.9-G2	29.7	6	E	TC	2140x1006x1440	1150	2958x1106x1723	1650	81	170
125	100	114	91	91	73	6BT5.9-G2	29.7	6	E	TC	2140x925x1440	1150	2958x1106x1723	1650	81	170
138	110	125	100	100	80	6BT5.9-G2	29.7	6	E	TC	2140x925x1440	1150	2958x1106x1723	1650	81	170
145	116	132	105	106	84	6BTA5.9-G2	31.0	6	E	TCA	2200x925x1440	1200	2958x1106x1800	1700	81	210
*150	120	136	109	109	87	6BTA5.9-G2	31.0	6	E	TCA	2200x925x1440	1200	2958x1106x1800	1700	81	210
150	120	136	109	109	87	6BTAA5.9-G2	34.0	6	E	TCCA	2320x925x1540	1200	3208x1106x1853	1800	81	250
165	132	150	120	120	96	6BTAA5.9-G2	34.0	6	E	TCCA	2320x925x1540	1200	3208x1106x1853	1800	81	250
175	140	159	127	127	102	6BTAA5.9-G12	38.0	6	E	TCCA	2400x925x1540	1200	3408x1106x1873	1950	81	285
188	150	169	135	135	108	6BTAA5.9-G12	38.0	6	E	TCCA	2400x925x1540	1200	3408x1106x1873	1950	81	285
200	160	180	144	144	115	6BTAA5.9-G12	38.0	6	E	TCCA	2400x925x1540	1200	3408x1106x1873	1950	81	285
*200	180	180	144	144	115	6CTA8.3-G2	44.0	6	E	TCCA	2400x925x1540	1200	3408x1106x1873	1950	81	285
225	180	200	160	160	128	6CTA8.3-G2	44.0	6	E	TCA	2375x955x1587	1550	3408x1106x1953	2250	83	320
*250	200	225	180	180	144	6CTA8.3-G2	44.0	6	E	TCA	2375x955x1587	1550	3408x1106x1953	2250	83	320
250	200	225	180	180	144	6CTAA8.3-G2	49.0	6	E	TCCA	2490x1015x1656	1800	3608x1158x2033	2650	83	350
275	220	248	198	198	158	NT855-GA	59.4	6	E	TCCA	2830x1100x1840	2700	4200x1400x2140	3850	83	420
285	228	260	208	208	166	6LTA8.9-G2	59.0	6	E	TCCA	2620x1080x1796	1850	3608x1158x2035	2770	83	420
300	240	273	218	218	174	6LTA8.9-G2	59.0	6	E	TCCA	2620x1080x1796	1850	3608x1158x2036	2770	83	420
303	242	275	220	220	176	6LTA8.9-G2	59.0	6	E	TCCA	2620x1080x1796	1850	3608x1158x2037	2770	83	420
313	250	285	228	228	182	6LTA8.9-G3	62.0	6	E	TCCA	2620x1080x1796	1950	3608x1158x2038	2770	83	420
345	276	313	250	250	200	NTA855-G1	73.4	6	E	TCA	2830x1100x1840	3000	4200x1400x2140	3850		530
*350	280	315	252	252	202	NTA855-G1	73.4	6	E	TCA	2830x1100x1840	3000	4200x1400x2140	3850		530
352	282	320	256	256	205	6LTA9.5-G1	68.0	6	E	TCCA	2780x1120x1700	2300	3908x1356x2153	3350		540

Technical Specification is subject to improvement without prior notice. All technical details should be validated with our Cummins Technical Team.



Philman Generators

CUMMINS RATING SHEET

The technical specification is subject to improvement without prior notice. All technical details should be validated by our Cummins Technical Team.



Assemble in China

www.philmangeneratorsinc.com



Assemble in China.

Range: 15 kVA – 4,500 kVA | Max synchronized capacity 40,000 kVA & up | 60 Hz



Standby Power		Prime Power		Continuous Power		Engine	Consumption	Engine Specification			Dimension Open	Weight	Dimension Silent	Weight	dB(A)	Tank
kVA	kW	kVA	kW	kVA	kW	Model	100 % (L/H)	Cyl.	Gov.	Asp.	LxWxH	KG	LxVxH	KG	7m 2m	(L)
375	300	344	275	275	220	NTA855-G1B/G2	80.5	6	E	TCA	3030x1175x1990	3200	4350x1400x2370	3950		500
400	320	364	291	291	233	NTA855-G3	87.0	6	E	TCA	3030x1175x1990	3200	4350x1400x2370	3950		600
400	320	364	291	291	233	6ZTAA13-G3	81.0	6	E	TCCA	2960x1360x2030	3250	4300x1700x2230	4300	84	740
425	340	386	309	309	247	6ZTAA13-G3	81.0	6	E	TCCA	2960x1360x2030	3250	4300x1700x2230	4300	84	740
438	350	394	315	315	252	NTA855-G3	87.0	6	E	TCCA	3030x1175x1990	3200	4350x1400x2370	3950	84	600
440	352	400	320	320	256	QSNT-G3	94.4	6	E	TCCA	3250x1120x1930	3650	4600x1400x2180	4350	84	680
450	360	409	327	327	262	QSZ13-G2	77.0	6	ECU	TCCA	2970x1370x2100	3250	4300x1700x2300	4300	85	740
460	368	418	334	334	267	QSZ13-G2	77.0	6	ECU	TCCA	2970x1370x2100	3250	4300x1700x2300	4300	85	740
470	376	438	350	350	280	QSZ13-G2	77.0	6	ECU	TCCA	2970x1370x2100	3250	4300x1700x2300	4300	85	740
475	380	438	350	350	280	6ZTAA13-G4	98.1	6	E	TCCA	2970x1370x2100	3250	4300x1700x2300	4300	84	740
488	390	439	351	351	281	QSZ13-G7	95.0	6	ECU	TCCA	3020x1370x2100	3250	4300x1700x2300	4300	84	740
500	400	450	360	360	288	NTAA855-G7A	98.0	6	E	TCCA	3020x1370x2100	3250	4300x1700x2300	4300	84	740
500	400	450	360	360	288	KTA19-G2	98.0	6	E	TCA	3020x1370x2160	4300	4650x1600x2390	5200	86	740
500	400	455	364	364	291	QSZ13-G3	89.0	6	ECU	TCCA	3200x1370x2160	3250	4650x1600x2360	4400	84	850
525	420	475	380	380	304	QSZ13-G5	89.0	6	ECU	TCCA	3020x1260x2200	3250	4650x1600x2360	4400	84	850
550	440	500	400	400	320	KTA19-G3	111.0	6	E	TCA	3020x1260x2200	4300	4650x1600x2360	5400	86	850
563	450	513	410	410	328	KTA19-G3	111.0	6	E	TCA	3200x1370x2160	4300	4800x1600x2360	5400	86	850
600	480	545	436	436	349	KTA19-G3 A	119.9	6	E	TCA	3200x1370x2160	4300	4800x1600x2360	5500	86	950
625	500	563	450	450	360	KTA19-G3 A	119.9	6	E	TCA	3370x1325x2184	4300	4650x1600x2395	5500	86	950
625	500	563	450	450	360	KTA19-G4	120.0	6	E	TCA	3370x1325x2184	4300	4650x1600x2395	5500	86	950
650	520	588	470	470	376	KTAA19-G5	134.0	6	E	TCCA	3370x1325x2184	4500	5000x2200x2530	5850	87	1000
*688	550	619	495	495	396	KTAA19-G5	134.0	6	E	TCCA	3500x1450x2230	4500	5000x2200x2530	5850	87	1000
*700	560	630	504	504	403	KTAA19-G5	134.0	6	E	TCCA	3500x1450x2230	4650	5100x2200x2530	5920	87	1050
700	560	625	500	500	400	QSK19-G4	143.0	6	ECU	TCCA	3600x1450x2400	4650	5100x2200x2530	5950	87	1050
713	570	642	514	514	410	QSK19-G4	143.0	6	ECU	TCCA	3600x1450x2400	4650	5100x2200x2530	5950	87	1050
750	600	675	540	540	432	KTAA19-G6A	140.0	6	E	TCCA	3600x1450x2400	4650	5100x2200x2530	5950	87	1050
750	600	688	550	550	440	QSK19-G5	150.	6	ECU	TCCA	3600x1450x2400	4650	5100x2200x2530	5950	87	1160
800	640	720	576	576	461	KT38-G	154.0	6	E	TC	3600x1450x2400	4650	5100x2200x2530	5950	87	1160
800	640	720	576	576	461	QSK19-G8	150.0	6	ECU	TCCA	3600x1450x2400	4650	5100x2200x2530	5950	87	1160
813	650	732	585	585	468	QSK19-G8	150.	6	ECU	TCCA	3600x1450x2400	4650	5100x2200x2530	5950	87	1160
853	682	768	614	614	491	KT38-G	154.0	12V	E	TC	3600x1450x2400	7150	5400x2200x2516	10000	87	1310
900	720	810	648	648	518	KTA38-G1	195.4	12V	E	TCA	4200x1720x2530	7300	5400x2200x2516	10100	87	1480
950	760	855	684	684	554	KTA38-G1	195.4	12V	E	TCA	4200x1720x2530	7300	5400x2200x2516	10100	87	1480
963	770	867	693	693	624	KTA38-G1	195.4	12V	E	TCA	4200x1720x2530	7300	5400x2200x2516	10200	87	1480
1000	800	900	720	720	576	KTA38-G2	204.0	12V	E	TCA	4300x1760x2521	7800	5400x2200x2516	10300	87	1550

Technical Specification is subject to improvement without prior notice. All technical details should be validated with our Cummins Technical Team.



Philman Generators

CUMMINS RATING SHEET

The technical specification is subject to improvement without prior notice. All technical details should be validated by our Cummins Technical Team.



Assemble in China

www.philmangeneratorsinc.com



Assemble in China.

Range: 15 kVA – 4,508 kVA | Max synchronized capacity 40,000 kVA & up | 60 Hz



Standby Power		Prime Power		Continuous Power		Engine	Consumption	Engine Specification			Dimension Open	Weight	Dimension Silent	Weight	dB(A)	Tank
kVA	kW	kVA	kW	kVA	kW	Model	100 % (L/H)	Cyl.	Gov.	Asp.	LxWxH	KG	LxVxH	KG	7m 7m	(L)
1020	816	918	734	734	587	KTA38-G2B	204.1	12V	E	TCA	4300x1760x2610	7800	5400x2200x2516	10300	87	1590
1038	830	934	747	747	598	KTA38-G2B	204.1	12V	E	TCA	4300x1760x2610	7800	5400x2200x2516	10300	87	1590
1050	840	945	756	756	605	KTA38-G2B	204.1	12V	E	TCA	4300x1760x2610	7800	5400x2200x2516	10300	87	1590
1100	880	990	792	792	634	KTA38-G2A	225.0	12V	E	TCA	4300x1760x2610	7900	5400x2200x2516	10300	87	1700
1125	900	1013	810	810	648	KTA38-G2A	225.0	12V	E	TCA	4300x1760x2610	7900	5400x2200x2516	10300	87	1700
1150	920	1035	828	828	662	KTA38-G3		12V	E	TCA	4300x1760x2610	7900	5400x2200x2516	10300	87	1700
1200	960	1080	864	864	691	KTA38-G4	245.2	12V	E	TCA	4300x2040x2550	8050	5400x2200x2516	10400	87	1900
1250	1000	1125	900	900	720	KTA38-G4	245.2	12V	E	TCA	4300x2040x2550	8050	5400x2200x2516	10400	87	1900
1275	1020	1147	918	918	734	KTA38-G4	245.2	12V	E	TCA	4300x2040x2550	8050	5400x2200x2516	10400	87	1900
*1300	1040	1170	936	936	749	KTA38-G9	267.0	12V	E	TCA	4400x2040x2550	8050	5400x2200x2516	11480	87	2100
*1350	1080	1125	900	900	720	KTA38-G9	267.0	12V	E	TCA	4400x2040x2550	8050	5400x2200x2516	11480	87	2100
*1375	1100	1237	990	990	792	KTA38-G9	267.0	12V	E	TCA	4400x2040x2550	8050	5400x2200x2516	11480	87	2100
1400	1120	1260	1008	1008	806	QSK38-G5	262.0	12V	ECU	TCA	4400x2040x2550	8050	5400x2200x2516	11650	88	2030
1438	1150	1294	1035	1035	828	QSK38-G5	262.0	12V	ECU	TCA	4400x2040x2550	8150	5400x2200x2516	11650	88	2030
1450	1160	1305	1044	1044	835	QSK38-G5	262.0	12V	ECU	TCA	4400x2040x2550	8150	5400x2200x2516	11650	88	2030
1500	1200	1350	1080	1080	864	KTA50-G3	282.0	16V	E	TCA	5310x2013x2411	8150	6200x2280x2516	13000	89	N/A
1550	1240	1395	1116	1116	893	QSK38-G4	278.0	12V	ECU	TCA	4580x2200x2550	8300	5800x2280x2516	11650	89	N/A
1563	1250	1407	1125	1125	900	KTA50-G3	282.0	16V	E	TCA	5310x2103x2411	8250	6200x2280x2516	13000	89	N/A
1587	1270	1428	1142	1142	914	KTA50-G3	282.0				5310x2103x2411	8300	6200x2280x2516	13000	89	N/A
1750	1400	1575	1260	1260	1008	KTA50-G9	330.0	16V	E	TCA	5890x2138x2487	9500	40HQ	15100	89	N/A
1875	1500	1688	1350	1350	1080	KTA50-G	330.0	16V	E	TCA	5890x2138x2487	9500	40HQ	15100	89	N/A
1931	1545	1738	1390	1390	1112	KTA50-G	330.0	16V	E	TCA	5890x2138x2487	9500	40HQ	15100	89	N/A
2000	1600	1800	1440	1440	1152	KTA50-G REMOTE	330.0	16V	E	TCA	TBD	TBD	40HQ	TBD	TBD	N/A
2000	1600	1800	1440	1440	1152	QSK50-G6	397.0	16V	ECU	TCLTA	5850x2210x2569	13500	TBD	TBD	TBD	N/A
2188	1750	1970	1576	1576	1260	QSK60-G6/G7	471.0	16V	ECU	TCLTA	6150x2210x2569	14500	7200x2440x3100	17600	TBD	N/A
2250	1800	2025	1620	1620	1296	QSK60-G6/G7	471.0	16V	ECU	TCLTA	6150x2210x2569	14500	7200x2440x3100	17600	TBD	N/A
2500	2000	2250	1800	1800	1440	QSK60-G6/G7	471.0	16V	ECU	TCLTA	6150x2210x2569	14500	7200x2440x3100	17600	TBD	N/A
2750	2200	2475	1980	1980	1584	QSK60-G14	485.0	16V	ECU	TCLTA	6150x2210x2569	14500	7200x2440x3100	17600	TBD	N/A
*2813	2532	2532	2025	2026	1620	QSK60-G6/G7	471.0	16V	ECU	TCLTA	6150x2210x2569	14500	7200x2440x3100	17600	TBD	N/A

Technical Specification is subject to improvement without prior notice. All technical details should be validated with our Cummins Technical Team.



Philman Generators

CUMMINS RATING SHEET

The technical specification is subject to improvement without prior notice. All technical details should be validated by our Cummins Technical Team.



Made in U.S.A

www.philmangeneratorsinc.com



Original International Corporate
Cummins Diesel Generator Set Series

Range
15kVA - 4,508kVA

Max synchronize capacity
40,000 kVA & up

60
HZ

Standby Power		Prime Power		Continuous Power		Engine	Origin	Consumption	Engine Specification			Dimension-Open	Weight	Dimension - Silent	Weight	SAE dB(A)	Tank	
KVA	KW	KVA	KW	KVA	KW	Model	Factor y	100% (L/H)	Cyl.	Gov.	Asp.	LxWxH	KG	LxWxH	KG	7m 7m	(L)	
15	12	14	11	-	-	X2.5-G4	USA	4.6	3	M	NA	1667x930x1282	745	2082x987x1525	1025	TBA	150	
20	16	18	15	-	-	X2.5-G4	USA	5.8	3	M	NA	1667x930x1282	763	2082x987x1525	1043	TBA	150	
25	20	22	18	-	-	X2.5-G4	USA	7.2	3	M	NA	1667x930x1282	776	2082x987x1525	1056	TBA	150	
38	30	30	24	-	-	X3.3-G2	USA	10	4	M	NA	1753x930x1238	860	2253x969x1616	1219	TBA	175	
44	35	40	32	-	-	X3.3-G2	USA	12.2	4	M	NA	1753x930x1238	872	2253x969x1616	1232	TBA	175	
50	40	45	36	-	-	S3.8-G8	INDIA	12.3	4	M	TC	2115x1044x1516	945	2600x1115x1795	1395	71	150	
63	50	56	45	-	-	S3.8-G9	INDIA	16	4	M	TC	2115x1044x1516	955	2600x1115x1795	1410	71	150	
75	60	68	54	-	-	S3.8-G10	INDIA	17.9	4	M	TCAC	2115x1044x1516	985	2600x1115x1795	1435	71	150	
100	80	91	73	-	-	6BTA5.9-G6	USA	27.2	6	E	TAC	2268x1094x1576	1574	3151x1142x1714	2274	70	350	
125	100	114	91	-	-	6BTA5.9-G6	USA	34.2	6	E	TAC	2268x1094x1576	1598	3151x1142x1714	2298	70	350	
169	135	153	123	-	-	6BTA5.9-G6	USA	40	6	E	TCAC	2537x1090x1846	1650	3460x1090x2390	2400	74	310	
188	150	169	135	-	-	QSB7-G5	UK	44.5	6	E	TCAC	2656x1100x1822	1576	3904x1142x2276	2948	72	513	
219	175	200	160	-	-	QSB7-G5	UK	50	6	E	TCAC	2656x1100x1822	1670	3904x1142x2276	3044	TBA	513	
250	200	225	180	-	-	6CTAA8.3-G7	USA	60	6	E	TCAC	2746x1100x1646	2050	3670x1100x2045	2850	TBA	513	
250	200	225	180	-	-	QSB7-G5	UK	57	6	E	TCAC	2656x1100x1822	1670	3904x1142x2276	3044	TBA	513	
281	225	256	205	-	-	6CTAA8.3-G9	USA	68	6	E	TCAC	2746x1100x1646	2100	3670x1100x2046	2900	75	376	
313	250	282	225	-	-	QSL9-G5	UK	74.3	6	E	TCAC	3086x1360x2018	3357	4259x1424x2315	4611	72	569	
344	275	313	250	-	-	QSL9-G5	UK	81.7	6	E	TCAC	3086x1360x2018	3357	4259x1424x2315	4611	72	569	
375	300	344	275	-	-	QSL9-G5	UK	89	6	E	TCAC	3086x1360x2018	3357	4259x1424x2315	4611	72	569	
438	350	400	320	-	-	NTA855-G3	INDIA	96	6	E	TC	3549x1100x2078	3569	5110x1563x2447	5698	TBA	TBA	
500	400	455	364	-	-	NTA855-G5	INDIA	110	6	E	TA	3549x1100x2078	3683	5110x1563x2447	5818	74	811	
500	400	455	364	-	-	QSZ13-G7	UK	111	6	E	TCAC	3686x1160x2266	4053	5093x1564x2446	5281	TBA	TBA	
550	440	500	400	-	-	QSZ13-G5	UK	119.3	6	E	TCAC	3686x1160x2266	4053	5093x1564x2446	5281	TBA	TBA	
563	450	512	410	-	-	QSK15-G9	UK	119.1	6	E	TCAC	3433x1500x2065	4824	5110x1563x2447	6130	71	711	
625	500	569	455	-	-	QSK15-G9	UK	135.9	6	E	TCAC	3433x1500x2065	4824	5110x1563x2447	6130	71	711	
754	603	681	545	-	-	VTA28-G5	INDIA	173	12	E	TA	3934x1468x2179	5839	RTF	RTF	TBA	TBA	
813	650	681	545	-	-	QSK19-G8	UK	188	6	E	TCAA	RTF	5590	RTF	RTF	TBA	TBA	
938	750	850	680	-	-	VTA28-G7	INDIA	221	12	E	TA	RTF	RTF	RTF	RTF	TBA	TBA	
938	750	850	680	-	-	QSK23-G3	UK	190	6	E	TA	4318x1856x2148	6487	RTF	RTF	TBA	TBA	
1000	800	906	725	-	-	QSK23-G3	UK	206	6	E	TA	4318x1856x2148	6487	RTF	RTF	TBA	TBA	
1156	925	1044	835	-	-	QST30-G3	UK	228	12	E	TAC	4302x1702x2139	6429	RTF	RTF	TBA	TBA	
1250	1000	1125	900	1160	928	KTA38-G14	INDIA	266	12	E	TA	4470x1785x2229	8380	RTF	RTF	TBA	TBA	
1250	1000	1125	900	-	-	QST30-G5	UK	272.3	12	E	TLTA	RTF	7857	RTF	RTF	TBA	TBA	
1265	1012	1150	920	-	-	QST30-G4	UK	267	12	E	TCAC	4417x2000x2387	7621	RTF	RTF	TBA	TBA	
1450	1160	1406	1125	-	-	QSK38-G4	UK	332	12	E	TA	RTF	RTF	RTF	RTF	TBA	TBA	
1563	1250	1406	1125	1210	968	QSK38-G4	UK	332	12	E	TA	RTF	RTF	RTF	RTF	TBA	TBA	
1563	1250	1375	1100	-	-	QSK50-G4	UK	335.4	16	E	TLTA	RTF	13270	RTF	RTF	TBA	TBA	
1588	1270	1400	1120	-	-	KTA50-G3	INDIA	330	16	E	TA	5105x2000x2238	9613	12192x2438x3233	17425	TBA	TBA	
1875	1500	1706	1365	1375	1100	QSK50-G8	UK	397	16	E	TLTA	RTF	13366	RTF	RTF	TBA	TBA	
1875	1500	1706	1365	-	-	QSK50-G4	UK	393	16	E	TLTA	RTF	13270	RTF	RTF	TBA	TBA	
1931	1545	1608	1286	-	-	KTA50-G9	INDIA	392	16	E	TA	5811x2033x2330	10967	12192x2438x3233	18818	TBA	TBA	
2000	1600	1820	1456	-	-	REMOTE RADIATOR	KTA50-G9	INDIA	392	16	E	TA	5811x2033x2330	10967	12192x2438x3233	18818	TBA	TBA
2000	1600	1820	1456	-	-	QSK50-G4	UK	393	16	E	TLTA	RTF	13270	RTF	RTF	TBA	TBA	
2188	1750	2000	1600	-	-	QSK60-G6	UK	458	16	E	TLTA	RTF	15155	RTF	RTF	TBA	TBA	
2500	2000	2281	1825	-	-	QSK60-G6	UK	535	16	E	TLTA	6175x2286x2537	15945	RTF	RTF	TBA	TBA	
2813	2250	2281	1825	-	-	QSK60-G14	UK	574.6	16	E	TLTA	RTF	37218	RTF	RTF	TBA	TBA	
2813	2250	-	-	2500	2000	QSK60-G9	UK	569	16	E	TLTA	6175x2494x3201	16530	RTF	RTF	TBA	TBA	
3125	2500	2920	2335	2438	1950	QSK78-G8	UK	634	18	E	TLTA	RTF	24232	RTF	RTF	TBA	TBA	
3438	2750	3125	2500	2625	2100	QSK78-G12	UK	694	18	E	TLTA	RTF	24238	RTF	RTF	TBA	TBA	
3750	3000	3438	2750	3125	2500	QSK95-G2	UK	753	16	E	TA	RTF	31200	RTF	RTF	TBA	TBA	
3750	3000	3438	2750	3125	2500	QSK95-G9	UK	768	16	E	TA	RTF	31200	RTF	RTF	TBA	TBA	
3844	3075	3532	2826	3220	2576	QSK95-G2	UK	753	16	E	TA	RTF	31200	RTF	RTF	TBA	TBA	
3844	3075	3532	2826	3220	2576	QSK95-G9	UK	768	16	E	TA	RTF	31200	RTF	RTF	TBA	TBA	
4063	3250	3750	3000	3125	2500	QSK95-G2	UK	821	16	E	TA	RTF	31200	RTF	RTF	TBA	TBA	
4063	3250	3750	3000	3125	2500	QSK95-G9	UK	836	16	E	TA	RTF	31195	RTF	RTF	TBA	TBA	
4195	3356	3884	3107	3259	2607	QSK95-G2	UK	821	16	E	TA	RTF	31200	RTF	RTF	TBA	TBA	
4195	3356	3884	3107	3259	2607	QSK95-G9	UK	836	16	E	TA	RTF	31195	RTF	RTF	TBA	TBA	
4375	3500	3750	3000	3438	2750	QSK95-G9	UK	893	16	E	TA	RTF	31200	RTF	RTF	TBA	TBA	
4375	3500	3750	3000	3438	2750	QSK95-G2	UK	878	16	E	TA	RTF	31200	RTF	RTF	TBA	TBA	
4508	3606	3884	3107	3572	2857	QSK95-G9	UK	893	16	E	TA	RTF	31200	RTF	RTF	TBA	TBA	
4508	3606	3884	3107	3572	2857	QSK95-G2	UK	878	16	E	TA	RTF	31200	RTF	RTF	TBA	TBA	

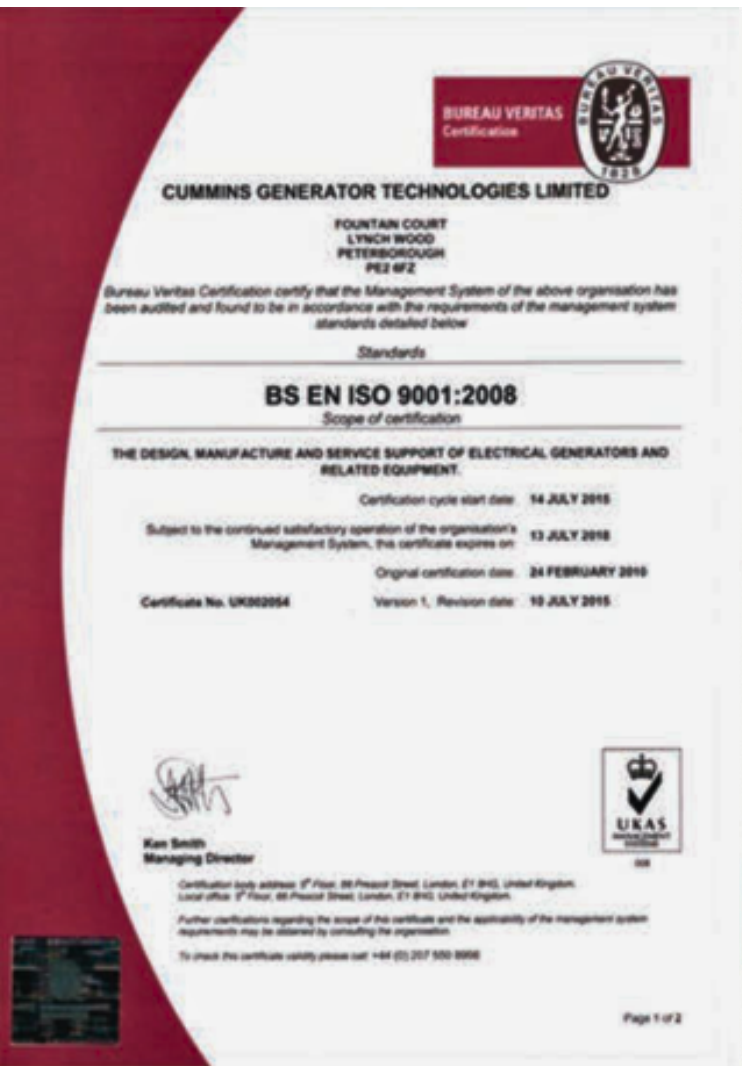
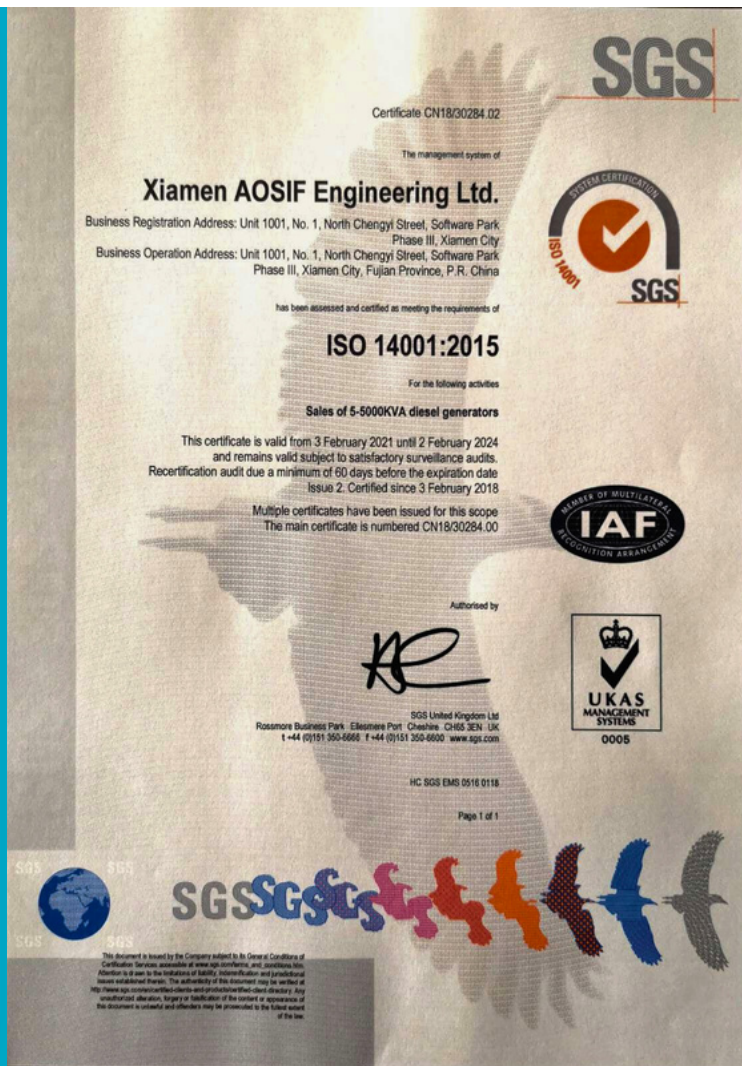
Technical Specification is subject to improvement without prior notice.

All technical details should be validated with our Cummins Technical Team.



Philman Generators

ENTERPRISE QUALIFICATION





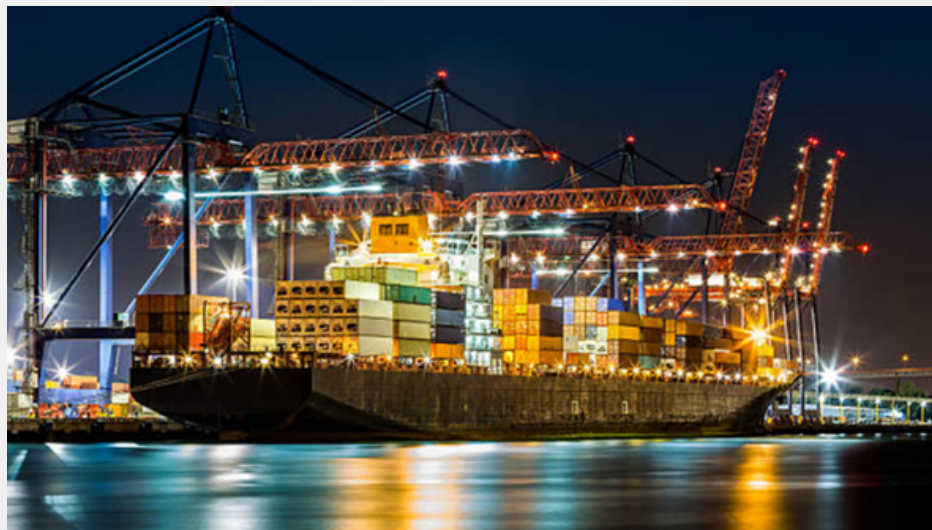
Emergency Services

Emergency services such as fire departments, police stations, and disaster response units often rely on diesel generators to ensure uninterrupted power supply for critical operations during emergencies.



Construction

Diesel generators are commonly used in construction sites to power tools, lighting, and other equipment.



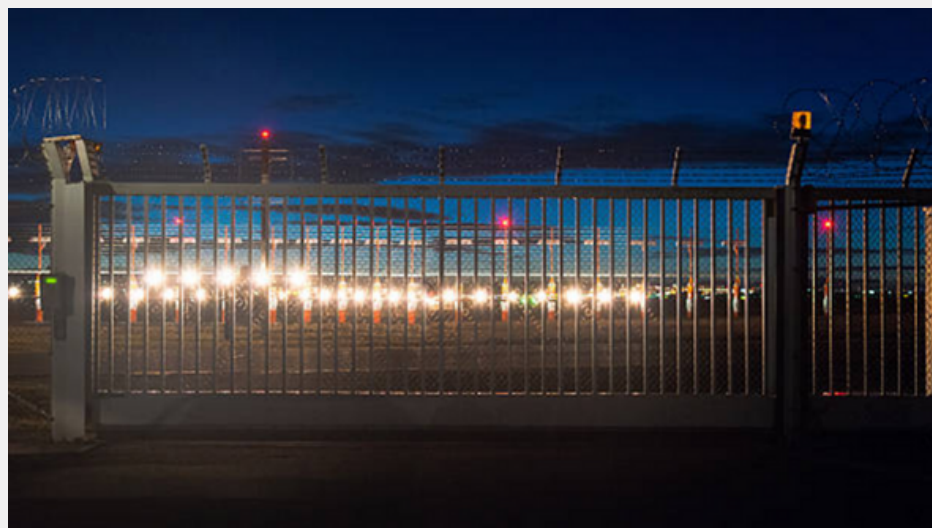
Marine

Diesel generators are widely used in the marine industry to power vessels, including ships, boats, and offshore platforms.



Mining

Mining operations often require a constant power supply for drilling, ventilation, and other machinery, making diesel generators essential.



Military

Diesel generators are crucial in military applications, providing power for field operations, base camps, communication systems, and other equipment.

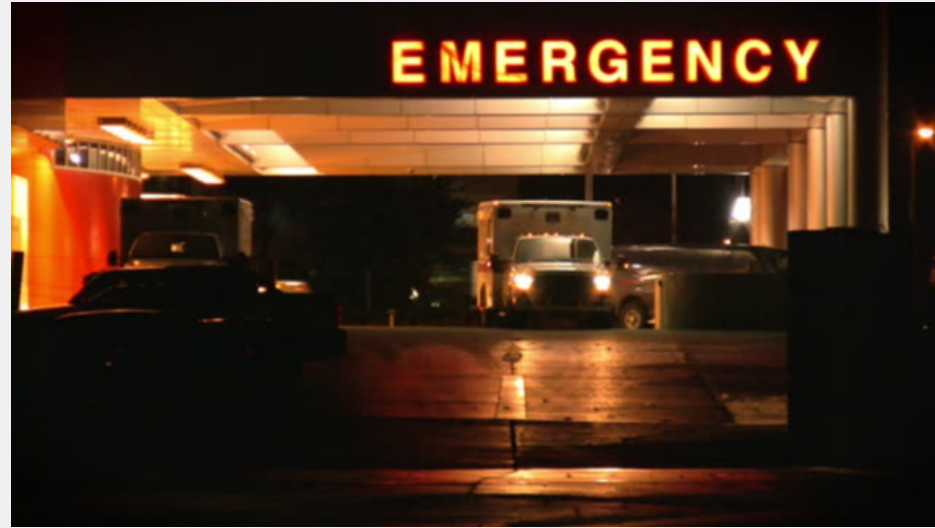


Oil & Gas

Diesel generators are used in oil and gas exploration and production activities, providing power for pumps, compressors, and other equipment.



GENSET APPLICATIONS



Emergency

Hospitals, clinics, and other healthcare facilities often rely on diesel generators as backup power sources to ensure uninterrupted power supply for critical medical equipment and patient care.



Manufacturing

Many manufacturing industries require a reliable power supply for their production processes, and diesel generators can provide backup or primary power as needed.



Telecommunication

Mobile network operators use diesel generators to provide backup power for cell towers, ensuring uninterrupted communication during power outages.



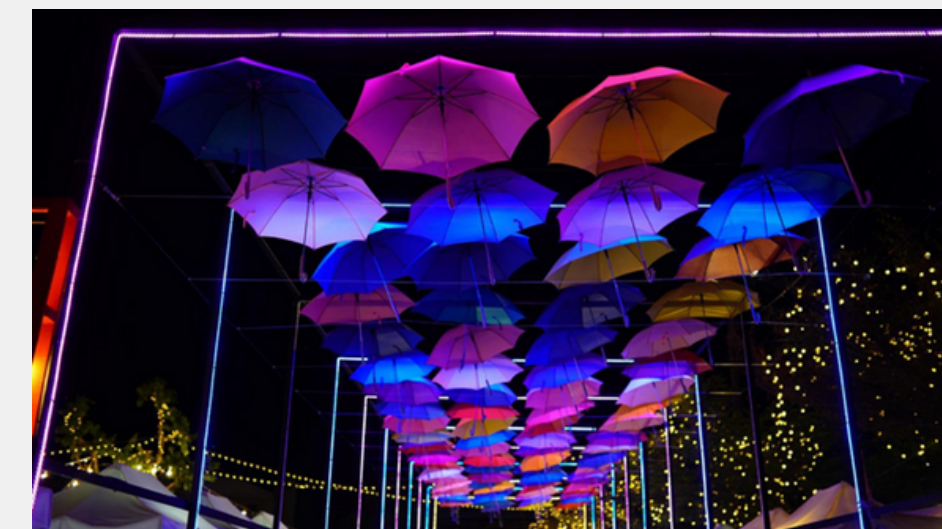
Agriculture

Farms and agricultural facilities may use diesel generators for irrigation systems, equipment operation, and power supply in remote locations.



Data Centers

Diesel generators play a vital role in data centers, serving as backup power sources to maintain continuous operation and protect sensitive equipment from power fluctuations.



Event Management

Diesel generators are commonly used in outdoor events, concerts, and festivals to provide temporary power for lighting, sound systems, and other event infrastructure.

GENSET SERVICES

Preventive Maintenance

- Our Preventive Maintenance service ensures that your Diesel Generator is running optimally and reliably. We offer detailed inspections and comprehensive maintenance services to keep your generator in top condition. We guarantee that your generator will be well taken care of and that any potential issues will be identified and addressed quickly.
- Provide skilled technician/s with special diagnostic tools that perform necessary maintenance check-ups and testing on jointly agreed scheduled dates.
- Monthly, Quarterly, Annually

Product Quality Warranty

- We take pride in providing the highest quality diesel generators available. Our rigorous quality control process ensures that each product meets the highest standards of safety and reliability. All of our generators are exhaustively tested before leaving our facility to ensure they meet our customers' needs.
- All troubles arising from factory defects & poor workmanship are subject to the standard factory warranty policy.
- The warranty period for standby applications is 1yr or 1000 hours, whichever comes first from the date of commissioning. Prime and standby power application is cyclic load.

Note: Parts found defective due to the user's failure to follow the manufacturer's standard operating instruction, lack of proper maintenance & equipment abuse is not covered by a warranty

Quality Control / After Service

- Pre-delivery inspection & testing.
- On-Site customer services.
- Aid customers Genset in (kW) sizing.
- Aid customers in the selection of products for the right application.
- Answer customers' queries about product design and technology.
- Customized solution for special requirements.
- Free-of-charge testing and commissioning.
- Provide hands-on and classroom training for Genset operation & maintenance.
- Qualified service personnel are on call 24/7 a week for your need.
- On-the-phone technical solution.
- Parts and filters are available in the country.

Sales Agreement

Unit Supply only

- Peripheral Expenses
- Delivery (Freight)
- Lifting, Rigging, Hauling & Positioning
- installation
- Civil Works
- Electrical
- Mechanical

Peripherals of Genset

- Circuit Breakers
- Switch Gears (LVSG & HVSG)
- MTS or ATS
- Synchronizing Panel
- Sound Proof Enclosure
- Battery Charger
- Fuel Tank
- Transformer
- Controllers

LIST OF COMPLETED PROJECTS

- ACE MEDICAL CENTER
- ALESON SHIPPING
- ASIA MEGA
- AVON PHILIPPINES
- BLUE CHIP GAMING & LEISURE CORP
- BMW EDSA
- BOUNTY FRESH FOOD
- CALAMBA MEDICAL CENTER
- CAMP AGUINALDO
- CITISTORE INC
- CITY SQUARE RESIDENCES
- DCMS
- DELTA BROADCASTING
- DILIMAN DOCTORS
- EAGLE POINT RESORT
- FIREFLY ELECTRIC
- FIRST CAGAYAN LEISURE AND RESORT
- FIRST RESIDENCES CORP
- FOLDED & HUNG
- FLYING V
- GEMINI PHILIPPINES
- GLOBAL GATEWAY DEVT CORP
- GOLDEN SEVEN AGRO
- GRAND GULF CONTAINER
- HEMOTEK RENAL CENTER
- HEXAT MINING
- HOME FOR THE AGED
- HOSPITAL
- JOLLIBEE
- JUDE EJERCITY ESTRADA FARM
- KAJIMA PHILIPPINES
- MAKATI DEVELOPMENT CORP
- MCKINDLEY HOME DEVT CORP
- MCU HOSPITAL
- MEC NETWORK INC
- MEGA CONCEPT HOLDINGS INC
- MEGAWIDE CONSTRUCTION
- MEGAWORLD
- METRO BACOLOD HOSPITAL
- METS LOGISTICS
- MSTM FOUNDATION
- NCCC MALL
- NICKEL ASIA CORP
- NORTH PARK
- PALAWAN UNIVERSITY
- PENBANK
- PEPSI COLA PHILS.
- PHESCO INC
- PHIL BUSINESS BANK
- PHINMA PROPERTIES
- PNTC COLLEGES
- POWER SYSTEM INC
- PRC
- PTT PHILIPPINES
- PUREGOLD
- QUEZON CITY SPORTS CLUB
- QUIRINO MEMORIAL MEDICAL CENTER
- RAJO LAUREL
- RAPU-RAPU PROCESSING CORP
- RIL SHIPPING LINES
- RURAL BANK OF CAUAYAN
- SAMSUNG
- SAVEMORE
- SC MEGAWORLD
- SEOIL PHILIPPINES
- SIEMENS
- ST JOSEPH ACADEMY
- STUDIO CITY
- STUDIO ZEN
- SUPER 8 RETAIL
- SUZUKI PHILIPPINES
- TAPA KING
- THE LINEAR MAKATI
- THE PEAK
- THUNDERBIRD RESORT
- TOYOTA PHILIPPINES
- TUNE HOTEL
- UNITOP GENERAL MDSE
- UNTV
- VILLA DE ROSARIO
- WATER DISTRICT
- YAKULT PHILIPPINES

PROJECT REFERENCES



The Medical City – Clark, Pampanga



Pepsi Cola Philippines – Muntinlupa



Diliman Doctor's Hospital - Quezon City



The Peak Tower – Makati City



The Linear – Makati City



Ramada Central Hotel – Binondo



Studio City - Alabang



Studio Zen - Manila



MCU Hospital - Manila



City Square Residences – Manila



Calamba Medical Center – Laguna

GENSET SPARE PARTS

At Philman Generator, we offer a wide selection of high-quality spare parts for diesel generators. Our spare parts are designed to help keep your generator running smoothly and reliably. We stock a variety of parts, including fuel pumps, air filters, oil filters, and alternators. All of our spare parts are compatible with a wide range of diesel generator models. Our team of experts is always on hand to help you find the right part for your generator. With our extensive selection of generator spare parts, you can enjoy the peace of mind that your generator will remain in peak condition.



CONTACT US

Managing Director

Frederick Tan

Mobile: (+63) 917 828 3733

Operation Head

Clyndal Familiara

Email: gurucor.opts@gmail.com

Mobile: (+63) 995 544 4922

Service Head

Jenny Villacampa

Email: philman.servicegenset@gmail.com

Mobile: (+63) 922 853 3303

Edgardo Bierra | Senior Account Manager

Email: edgar.philman@gmail.com

Mobile: (+63) 917 892 6083

Reynald Padilla | Account Manager

Email: reynald.philman@gmail.com

Globe: (+63) 917 629 3330

Rey Reyes Tan | Account Manager

Email: reyreyestan@gmail.com

Globe: (+63) 977 837 7547

Smart: (+63) 919 008 9604

Zoom ID: 985 128 1614

Skype ID: live: cid.ee0ea551e6c9297d

Alexander Ponpon | Account Manager

Email: alexander.philman@gmail.com

Globe: (+63) 915 687 2761

Smart: (+63) 969 456 7374

Operation Assistant

Irish Mae Vargas

Email: philmangeneratorsales@gmail.com

Mobile: (+63) 950 381 8573

Marketing

Louie Sumaway

Email: marketing.opts@gmail.com

Mobile: (+63) 935 698 5742

Senior Technician

Daryl Aucay

Mobile: (+63) 917 852 2674

KEEP IN TOUCH

Email

gurucor.opts@gmail.com

Social Media

[@philmangenerators.philgen](https://www.instagram.com/philmangenerators.philgen)

Address

Main Office:

533 Ilang-Ilang Street San
Nicholas, Binondo Manila, 1006
Metro Manila, Philippines

Phone Number

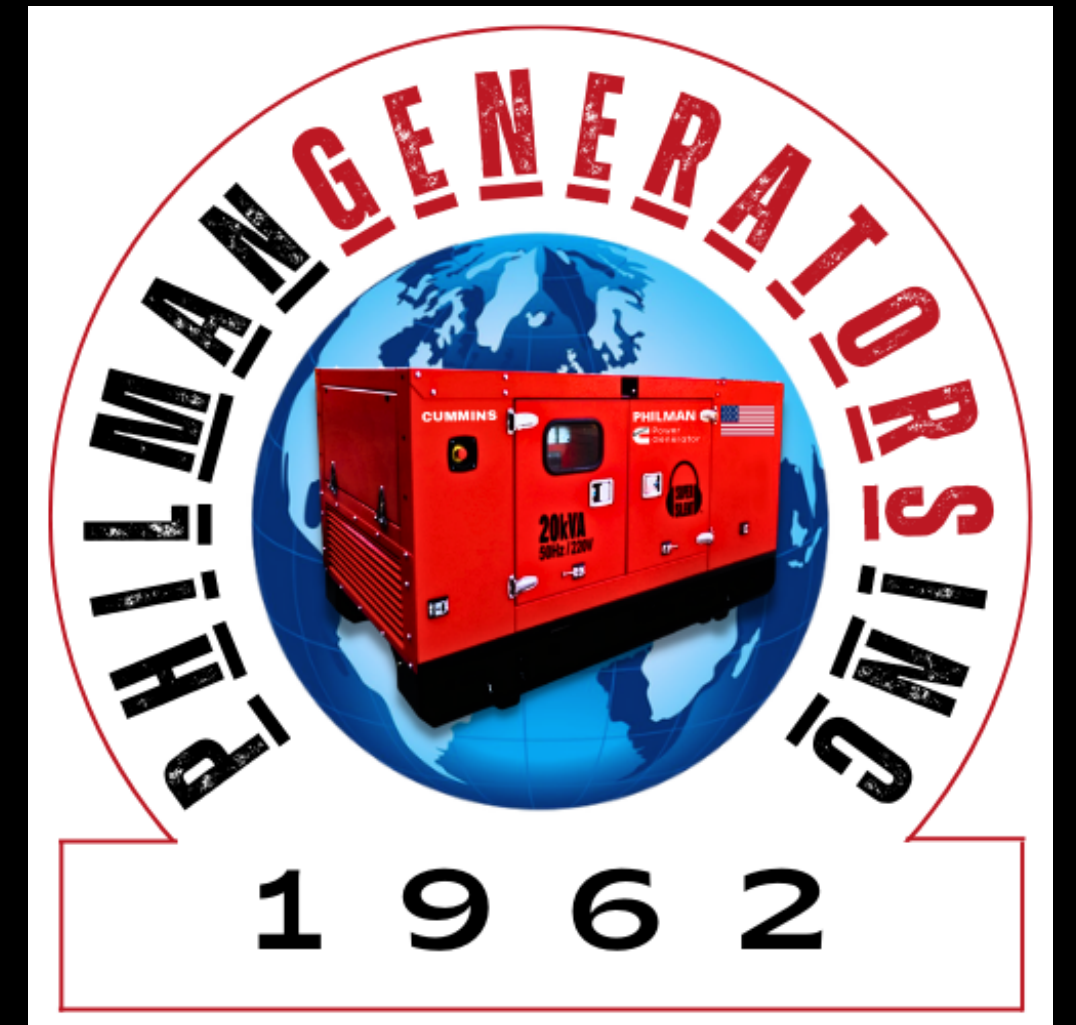
Landline: 8241 3480;
5313 5701 to 03
Operations: +63 995 544 4922
Services: +63 922 853 3303

Warehouse:

1088 Zobel St., Corner
Romualdez St., Isla de Provisor,
Paco Manila, 1000 Metro
Manila, Philippines

Website

www.philmangeneratorsinc.com



Philman Generators